



HECTOR PEARCE

Intelligent real estate

To Let

## Part Ground Floor Suite, Hembury House

Pynes Hill, Exeter, EX2 5AZ



### PROPERTY SUMMARY

- 3,359 sq ft ( 312 sq m )
- 13 car parking spaces
- Recently refurbished to include:
- New recessed LED lighting
- New suspended ceilings
- New carpeting / full re-decoration
- New perimeter dado trunking for services
- Refurbished reception lobby

## LOCATION

Exeter has a thriving business community and functions as the principal administrative centre of Devon and the South West. The city is home to several major UK and international organizations including the Met Office, EDF Energy, Devon & Cornwall Constabulary and South West Water.

Pynes Hill is Exeter's premier office park, situated towards the city's eastern edge. Located on the edge of an attractive Valley Park.

There is excellent access to the M5 motorway at junctions 29 and 30 as well as good links to main line railway stations and the highly successful Exeter Airport.

Exeter also prides itself on being one of the country's best bike friendly cities with an ever expanding cycle network.

Pynes Hill also benefits from having a Costa Coffee at its entrance and being near to Rydon Lane Retail Park and Ludwell Valley Park, one of six Valley parks managed by the Devon Wildlife Trust.

Pynes Hill occupiers include Michelmores Solicitors, PKF Francis Clark, the NHS, Jacobs, Cuckoo Fibre and many others. TOMY and the Royal Devon University Healthcare Trust are tenants of the part ground and first floors respectively.

## DESCRIPTION

Hembury House benefits from an impressive spacious entrance / visitor reception area which has recently been refurbished.

There are Communal WC facilities on ground and first floors and shower facilities on the first floor.

The office suite itself provides a flexible open-plan floor plate with good levels of natural light. It is due to be refurbished to include:

New recessed LED lighting

New suspended ceilings

Full re-decoration

New perimeter dado trunking for services distribution

There are 13 car spaces with the suite (1:265 sq ft).

## LEASE TERMS

Offered by way of a new full repairing and insuring lease on terms to be agreed. For details of rent and other outgoings contact the agents.

## SERVICE CHARGE

There is a service charge to cover the maintenance and upkeep of the common parts which is recharged to the tenants on a proportionate basis.

## ESTATE CHARGE

There is an Estate Charge for the building which is shared proportionately between the tenants.

## BUSINESS RATES

Assessed as Offices and Premises. For confirmation of the business rates, you should contact Exeter City Council on 01392 265 559.

## ENERGY PERFORMANCE CERTIFICATE

The suite is to be re-assessed on completion of the refurbishment works.

## LEGAL COSTS

Both parties to bear their own legal costs in the transaction.

## VAT

All figures quoted are exclusive of VAT if applicable.

Rateable Value 2010: £219,000

UBR multiplier 2011/2012: 43.3p in the £.

## FURTHER INFORMATION & VIEWING

For further information or to arrange a viewing contact the agents.

Andrew Pearce

Tel: 07971 278 386

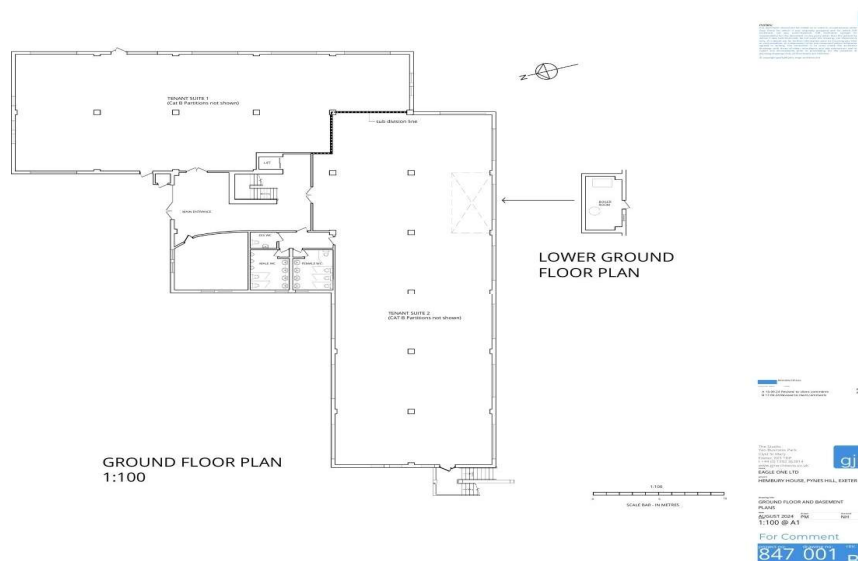
Email: [ap@hectorpearce.com](mailto:ap@hectorpearce.com)

# Part Ground Floor Suite, Hembury House

Pynes Hill, Exeter, EX2 5AZ

## ACCOMMODATION

FLOOR	SQ FT	SQ M
Part Ground Floor Suite 1	3,359	312
Part Ground Floor Suite 2	Let to TOMY	
First Floor	Let to Royal Devon University Healthcare Trust	
TOTAL	3,359	312



## HECTOR PEARCE

Intelligent real estate



Andrew Pearce 📞 07971 278 386 @ ap@hectorpearce.com 🌐 hectorpearce.com

Winslade House, Winslade Park, Clyst St Mary, Exeter, EX5 1FY

Hector Pearce LLP. All rights reserved. All information contained herein is from sources deemed reliable however no representation or warranty is made to the accuracy thereof.